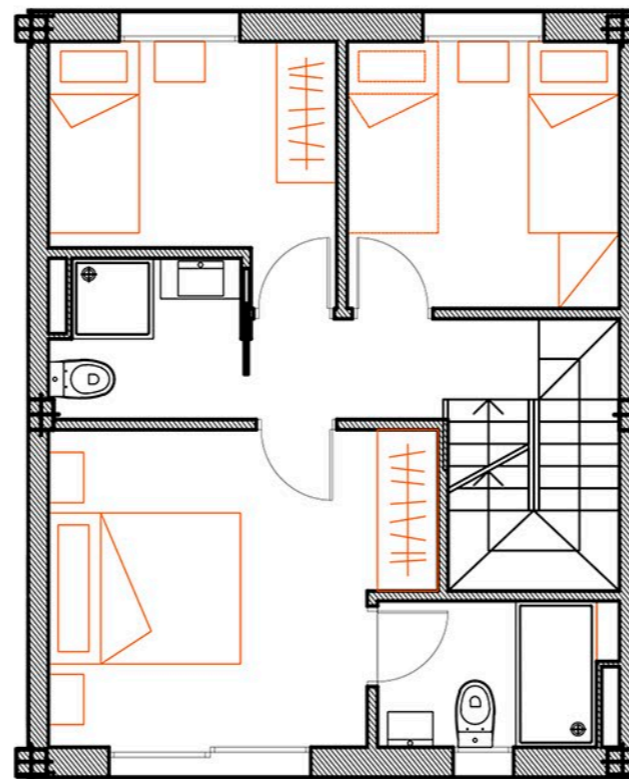
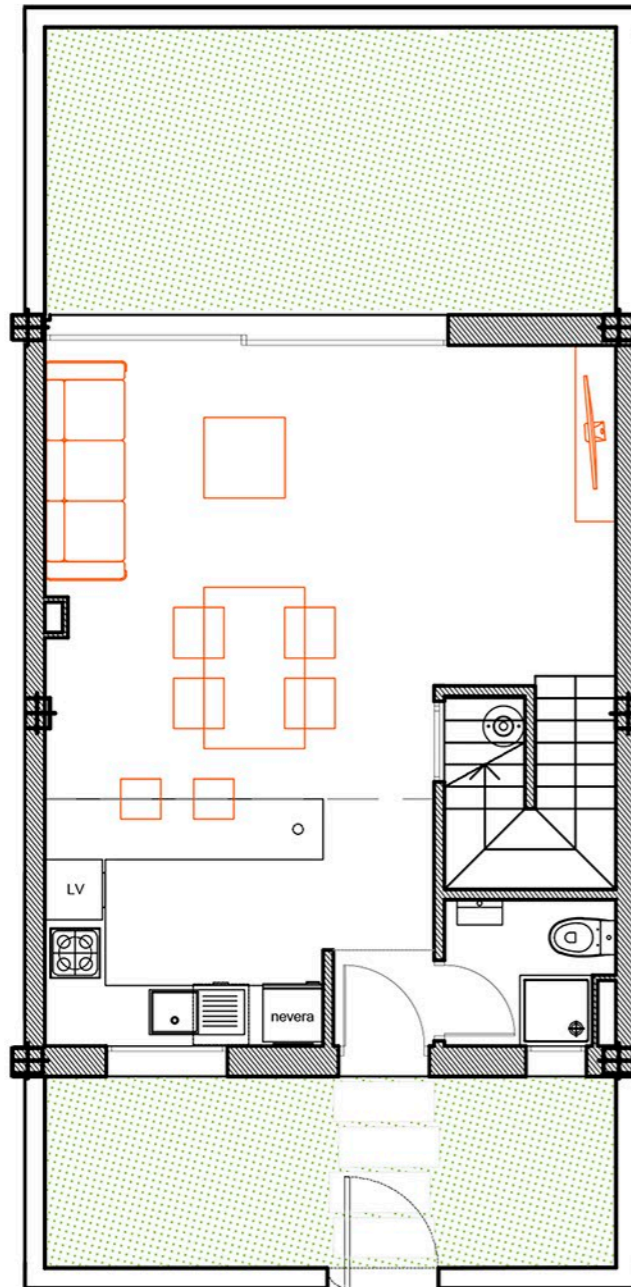


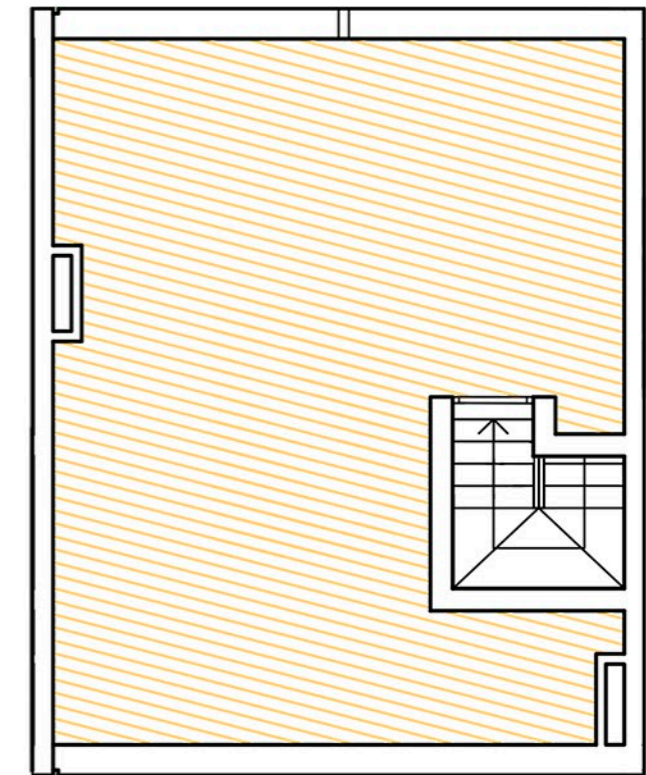
# PROMOCIÓN COLÓN DE IBIZA

javier planas arquitectura

Vivienda 3  
Duplex - Jardín - Solarium



escala 1/75



Sup. Computable total:	
Vivienda 3:	88,78 m2
Jardín:	26,88 m2
Solarium:	40,54 m2
Acceso a solarium:	4,00 m2
<b>Sup. total:</b>	<b>160,20 m2</b>