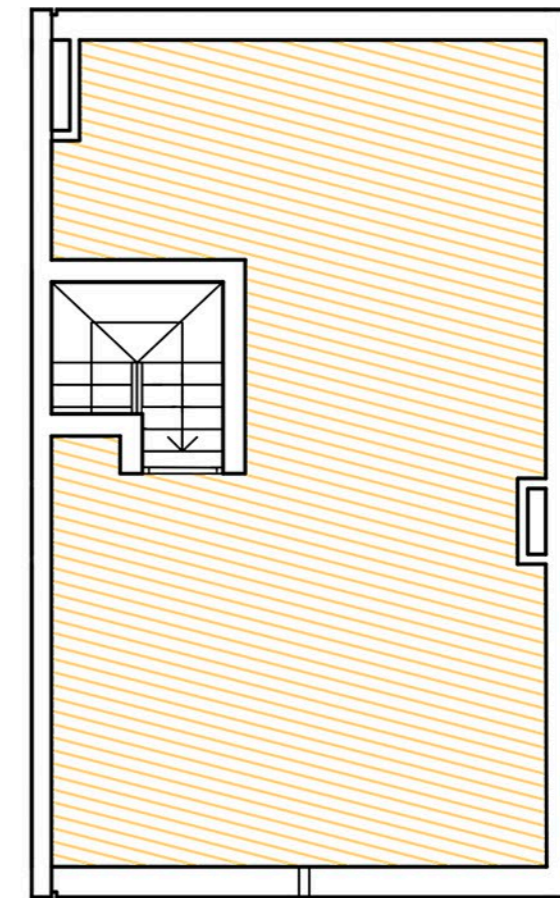
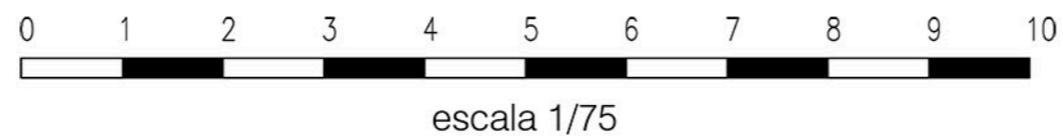
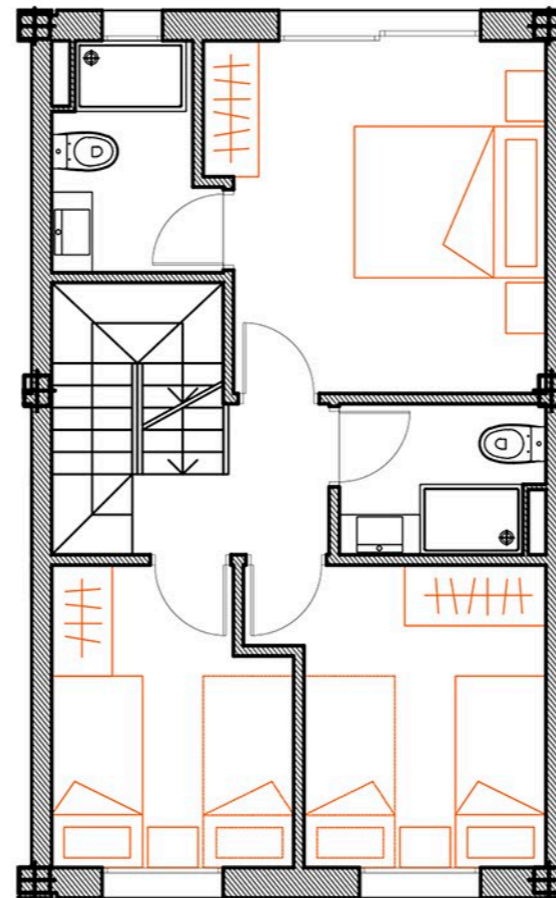
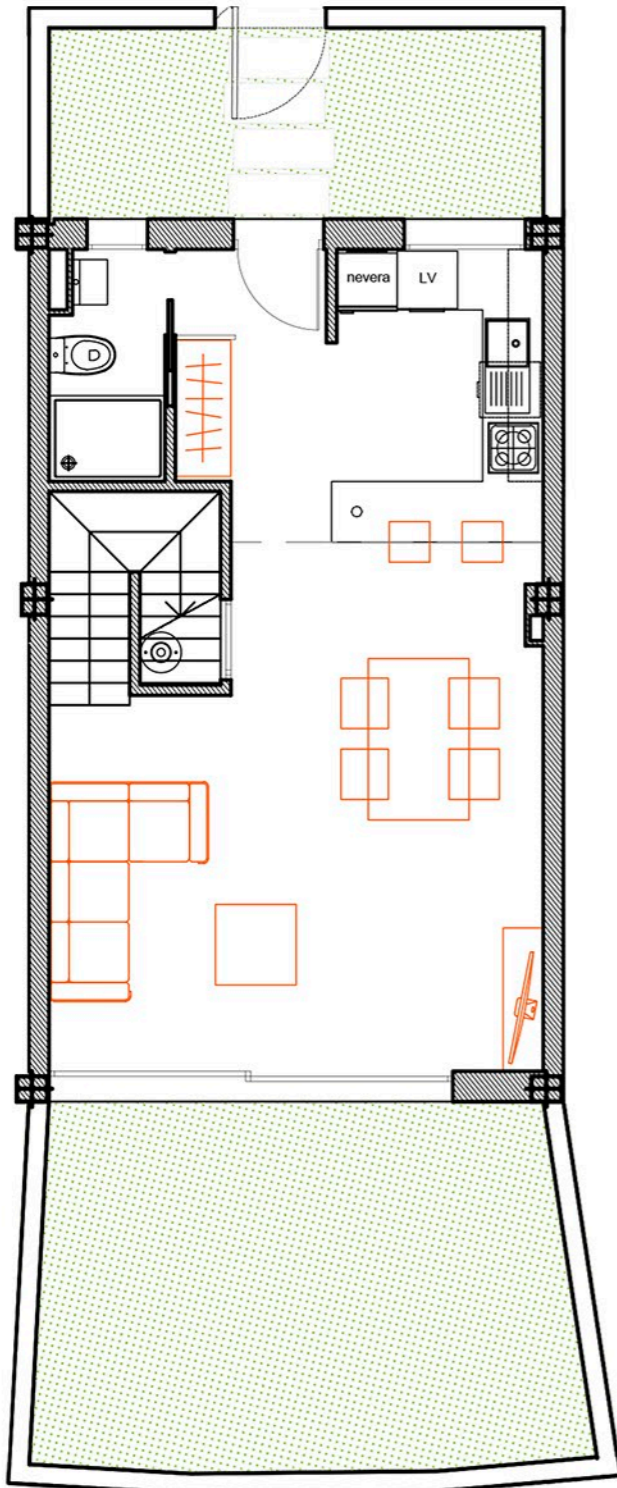


PROMOCIÓN COLÓN DE IBIZA

javier planas arquitectura



Vivienda 7
Duplex - Jardín - Solarium



Sup. Computable total:	
Vivienda 7:	89,52 m2
Jardín:	23,85 m2
Solarium:	40,88 m2
Acceso a solarium:	4,00 m2
Sup. total:	158,25 m2